

MICROX % ZR 96

Oxygen Analyser With % Zirconia Sensor
Compact and rugged 0-96 % Oxygen Analyser

Applications in the Gas Generation, Pharmaceutical, Food and Beverage Industries.



An Inexpensive but high quality solution to your Oxygen analysis requirements

Key Features

- > Long Life, Low Maintenance Zirconia Sensor
- > Low Cost Compact Oxygen % Analyser .
- > LCD Display and 4 Button Multifunction Keypad.
- > Analogue 4-20mA Output for retransmission of measured
- > RS232 Communications provided.
- > Plug & Socket terminal Connections

Product Description

The INMATEC Microx Oxygen Analysers are a range of high quality low cost OEM designed Din Rail units for high quality Oxygen analysis.

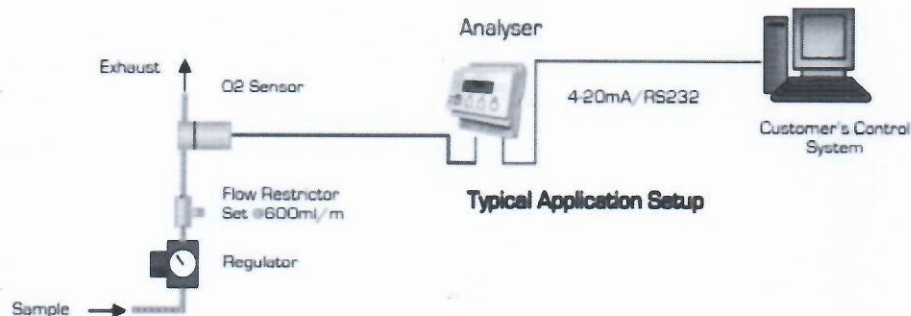
The Microx % ZR 0-96% is configured to measure in the range 0-96% oxygen by volume.

A process sample is presented to the Zirconia Sensor by means of sample line connection to the integral flow through base.

Inmatec Part No. 2009011197



TECHNICAL SPECIFICATIONS	
ANALYSER OVERALL SIZES:	86 mm High x 69 mm Wide x 58 mm Deep.
MOUNTING:	Din Rail Mount M36.
ANALYSER WEIGHT:	Panel Mount -150 gr
SENSOR:	Mini-Zirconia.
SENSOR HOUSING:	62.5 mm (L) x 31 mm (DIA); Aluminium Alloy; Weight - 150 gr. Potted Connection cable. 1/8" NPT sample connection.
MEASUREMENT RANGE:	0-25% ; 0-96% Oxygen configurable
REPOSE TIME T 90:	<5 seconds.
RESOLUTION:	+/- 0.01 % (0-25% range); +/-0.1% (0-96% range)
ACCURACY:	+/- 1 % Of Range
POWER REQUIREMENTS:	24 VDC +/- 10%. (Max. Load 160mA)
DISPLAY:	100 x 33 dot graphics display module.
USER INTERFACE:	4 button keypad.
COMMUNICATIONS:	RS 232 bi-directional.
ANALOGUE OUTPUT:	4-20 mA current loop powered. Linearity is +/- 1%.
DIGITAL OUTPUTS OPTIONAL:	3 off Relay, Dry Contact 5 Amp rated.
TEMPERATURE RANGE: (ambient)	Operating -5°C to + 50°C. Storage -20°C to +50°C.
ENVIRONMENTAL RATING:	IP rating varies depending on packaging offered or required.
ELECTROMAGNETIC COMPATIBILITY:	CE marked and tested to EN61000-6-4; EN61000-6-2; EN55022;
ANALYSER PART No.:	01-397
SENSOR PART No.:	01-398



Typical Sampling Arrangement

PS-Microx-D%-ZR-96-01-419-001-11



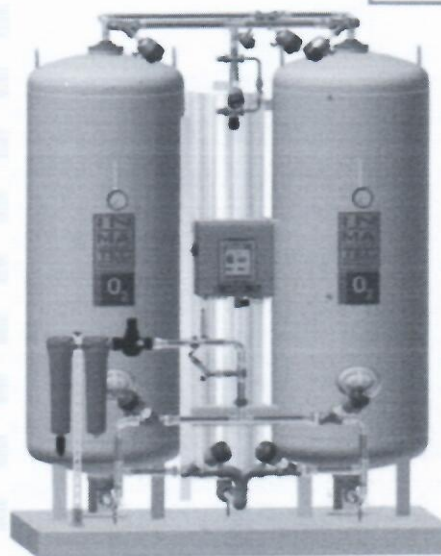
ON SITE IS OUR WORLD <

ONSITE IS OUR WORLD



Generator	POC 8500 med
Serial No.	1009700631
Dimensions	1260x2110x2820 LxWxH (mm)
Design pressure	11 bar
Operating pressure	7 bar
Net weight	2 800 kg
Noise level	55 max 85 dB (A)
Ambient temperature	+5 to +40 °C
Electrical connection	230V 50Hz 110V 60 Hz
Power consumption	150 W
Safety class	54 IP
Inlet Filtration	0,01 micron
Inlet Filtration (Active carbon filter)	0,003 micron
Outlet Filtration (sterile)	3 to 5 micron
Temperature *	20 °C
Above Sea Level *	0 m
Pressure *	1,0133 bar
Humidity *	70 %

* Consult inimatec for performance under other specific conditions



Oxygen Purity	93%
Capacity Nm ³ /h	37,30
Compressed air factor	10,00
Compressed air Nm ³ /h	373,00
Compressed air m ³ /h *	406,86
Product vessel (l)	1 500
Compressed air vessel (l)	2 000
Compressed air inlet	1"

Connection O ₂ output	½"
Connection Silencer	DN 125

Med Spezification

Stainless steel valves and piping

Generator Spezification

PSA Oxygen Generators separate oxygen from pressurised air. The composition of the product is determined by measuring the residual oxygen content.

The oxygen content is calculated by subtracting the residual oxygen content from 100 %.

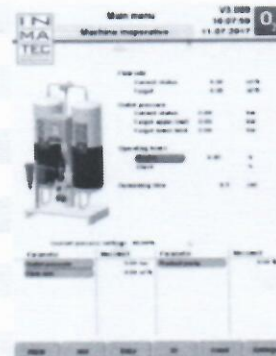
Air is composed of nitrogen (78.1%), oxygen (20.9 %), Argon (0.9 %), CO₂ (0.03 %), and some trace inert gases.

Compressed air specification

Dew point +3 °C, Air quality according to ISO 8573.1, class 1 solid particulates and oil class 4 humidity, free of all contamination (free of ozone)

Touch Control Panel

Standard	Option	Option
Oxygen Analyser	Inlet Pressure	Dew Point Outlet
Outlet Pressure	Inlet Temperature	Dew Point Inlet
Alarm Handling	Flow	Automatic Pure Technology
Trend Display	Basic Load Change	Auto Restart
Data Storage / Export	Analog Outputs	CO and CO ₂ Analyser
Multilingual	Profinet	
Purity Selection	Modbus	
Operating Hours	Remote Control	
Timer	Alarm via E-Mail	





Certificate

SQS herewith certifies that the company named below has a management system which meets the requirements of the standard specified below.



**INMATEC Gase
Technologie GmbH & Co. KG**
Gewerbestrasse 72
82211 Herrsching
Germany

Scope of certification

Whole Company

Field of activity

Medical oxygen production,
inspection and stocking system

Normative base

EN ISO 13485:2016 Medical devices –
Quality Management System



Validity 07.03.2019–06.03.2022
Issue 07.03.2019

Reg. no. 36033

X. Edelmann
X. Edelmann, President SQS

F. Müller
F. Müller, CEO SQS



sqs.ch



Swiss Association for Quality and
Management Systems SQS
Bernstrasse 103, 3052 Zollikofen, Switzerland



Swiss Made



EC-Certificate

SQS as a conformity assessment body identification number 1250 herewith certifies the company

**INMATEC Gase
Technologie GmbH & Co. KG
Gewerbstrasse 72
82211 Herrsching
Germany**

the use of a quality assurance system in its design, development, manufacturing and distribution which fulfills the requirements set out in:

ANNEX II

Directive 93/42/EEC (without section 4)

This approval is based on the report dated March 20, 2019.

The scope of validity covers the products

**Medical oxygengenerators of the type
IMT-POC 8000 to 8950 med**

The following CE label can be applied to these products mentioned in the Appendix of this certificate

CE 1250

A condition for the validity of this certificate is a regular examination in accordance with Annex II.5 of the Directive 93/42/EEC.



Validity 22.03.2019 – 21.03.2022
Issue 22.03.2019

Reg. no. 36160
Approved Medical Responsible
22.03.2019



F. Müller, CEO SQS



D. Taddeo, Medical Responsible



sqs.ch

Swiss Association for Quality and
Management Systems SQS
Bernstrasse 103, 3052 Zollikofen, Switzerland



ANNEX II

Directive 93/42/EEC (without section 4)

This Appendix is valid only in connection with the following certificate:

Registration Number 36160

Validity from March 22, 2019 up to and including March 21, 2022

This approval includes the following Medical Device/s:

Class IIa

Oxygensgenerators of type:

IMT-POC 8150 med
 IMT-POC 8250 med
 IMT-POC 8350 med
 IMT-POC 8450 med
 IMT-POC 8550 med
 IMT-POC 8650 med
 IMT-POC 8000 med
 IMT-POC 8100 med
 IMT-POC 8200 med
 IMT-POC 8300 med
 IMT-POC 8400 med
 IMT-POC 8500 med
 IMT-POC 8600 med
 IMT-POC 8700 med
 IMT-POC 8800 med
 IMT-POC 8900 med
 IMT-POC 8910 med
 IMT-POC 8920 med
 IMT-POC 8930 med
 IMT-POC 8940 med
 IMT-POC 8950 med

Appendix issued: 22.03.2019

